



Meeting the Requirements of the EPA
ENERGY STAR® Homes Thermal Bypass
Checklist

ACI

New Jersey Home Performance Conference

Ann Marie Apgar
Technical Services Manager
Wall, New Jersey
January 24, 2007



What I'll Cover Today

- EAM as a Company
- 2006 Bypass Checklist Activities & Challenges
- Builder Feedback 2006
- Actual Field Findings
- Summary
- Questions and Answers



EAM as a Company

- **As HERS Provider**
 - ◆ Program Design
 - ◆ Plan Analysis
 - ◆ On-site Commissioning
 - ◆ Certification
 - ◆ Impact Reports
 - ◆ Evaluation
 - ◆ Training
 - ◆ Marketing
- **As Builder Consultant**
 - ◆ Plan Analysis
 - ◆ Res-Check
 - ◆ Manual J Services
 - ◆ Manual D Services
 - ◆ Commercial Cost Studies
 - ◆ Quality Assurance Inspections
 - ◆ Training
 - ◆ Marketing



2006 TBC Activities & Challenges

- Opportunity to provide real-time input to EPA
- Testing & Integration of checklist in field practices
- Awareness building with internal staff
- Builder and Trade Ally education
- Increase site workers attention to the details
- Time/Cost recovery for Rater & Builder
- Compliance in one stop
- National goals vs. Regional needs

Builder Feedback 2006

- Added labor and material cost – PO already in place
- Change orders are a “no – no”
- Excessive requirements (rim & band joist continuous sealing)
- Conflict with local code office requirements and/or manufacturer specifications (i.e. fireplaces)
- Solid baffles at framing bays in attic eaves a downer
- Dropped ceiling & Soffit learning curve
- What’s coming next....

Actual Field Findings

- Compressed Insulation



Actual Field Findings

- Getting Closer to Proper Insulation around Obstructions



Actual Field Findings

- Almost... but Missed the Corners



Actual Field Findings

- Where's the 6th Side to this Plumbing Area?



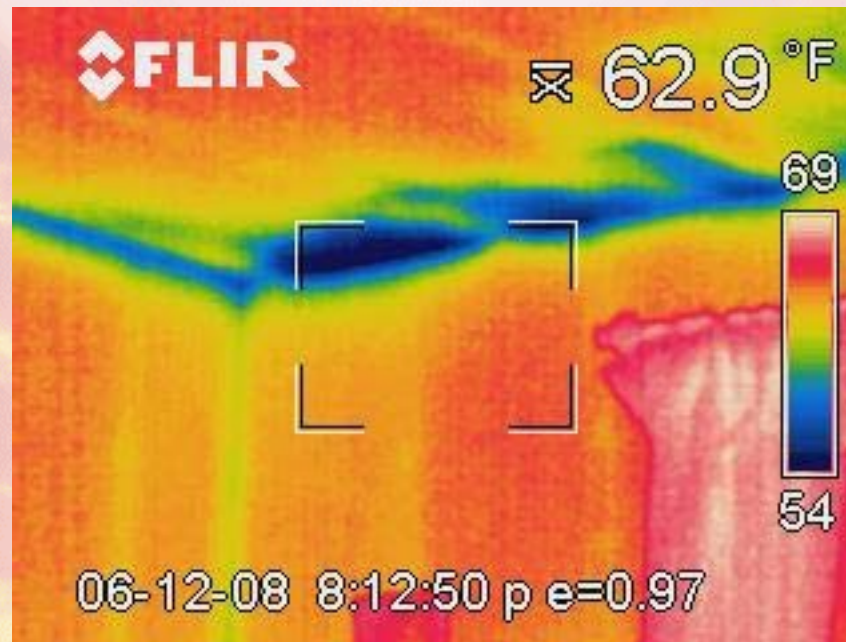
Actual Field Findings

- Can You Find the Air Sealing Requirements?



Actual Field Findings

- Why the Wind baffles are so Important



Actual Field Findings

- Draft Block From Attic to Floor Cavity



Actual Field Findings

- Proper Draft Blocking from Attic over Garage to Living Space



Actual Field Findings

- Properly Sealed Duct Shaft



Actual Field Findings

- Well Sealed Pipe Shaft



Actual Field Findings

- A Failed Attempt at Soffit Draft Blocking



If only the builder had gone ENERGY STAR...



Summary

- Build internal awareness of the checklist
- Manage the process
- Communicate change to your Builder Client
- Communicate changes to Trade Allies
- Provide feedback to EPA & RESNET



Questions and Answers

Thank You!

Ann Marie Apgar

Technical Services Manager

EAM Associates, Inc.

Wall, New Jersey

732-556-9190 voice

732-556-9195 fax

aapgar@eamenergy.com